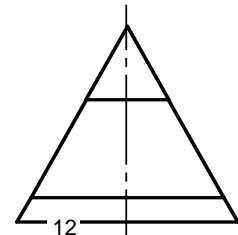
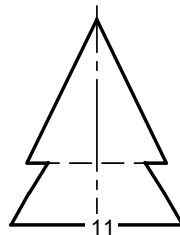
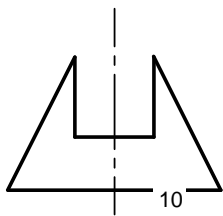
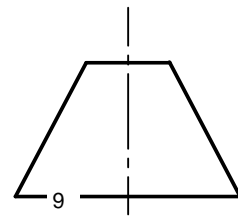
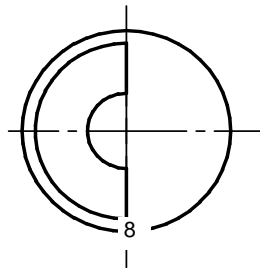
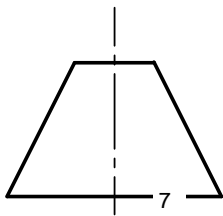
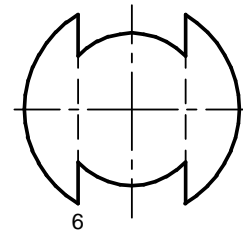
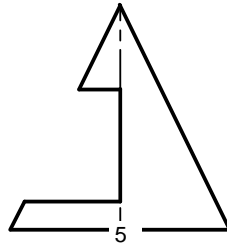
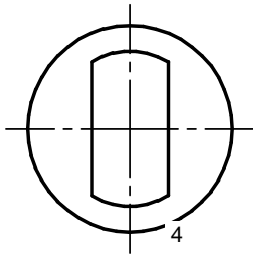
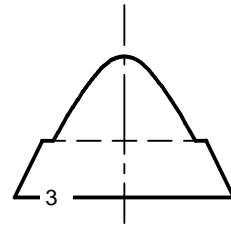
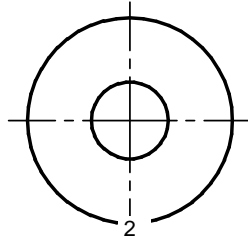
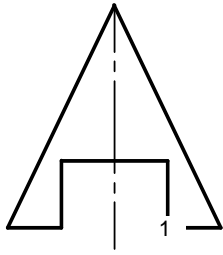


Aufgabe: Ordne die Ansichten richtig zu, so dass sie zu vier verschiedenen Kegelkörpern (K) passen.



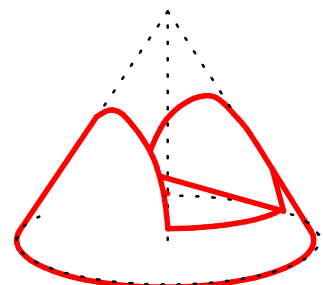
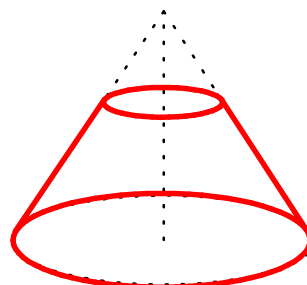
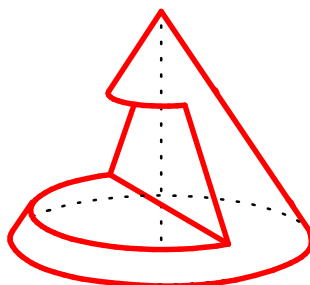
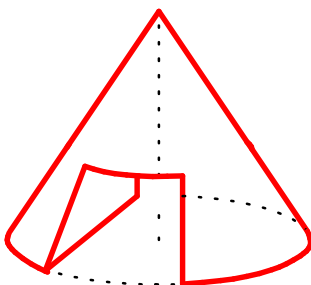
K1: V1, D6, S11

K2: V5, D8, S12

K3: V7, D2, S9

K4: V10, D4, S3

Fertige vier Raumbildskizzen:



Normgerechtes Konstruieren

Zuordnungsaufgabe -2

Nr.



AB 243 - 11b

Datum:

Name:

Kl.